

**INVESTMENT OBJECTIVE:**

Our primary objective across all duration mandates is to outperform the market with comparable volatility by utilizing our proprietary and unique Quality-Yield investment approach and the deep experience and continuity of our investment team.

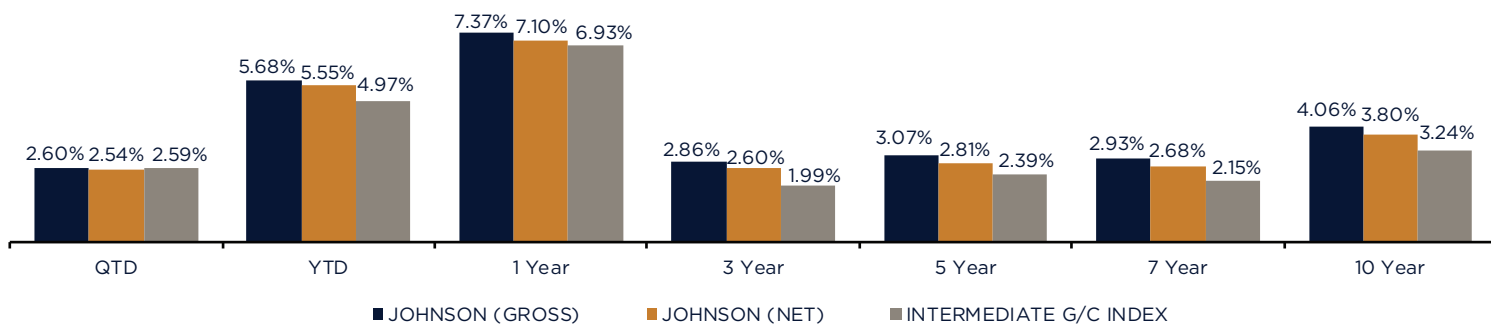
**INVESTMENT PHILOSOPHY:**

Our Intermediate Fixed Income investment philosophy is based on the following beliefs:

- We believe bonds should act like bonds, especially during periods of economic or market stress.
- We believe combining both quality and yield produces superior, risk-adjusted returns.

**PORTFOLIO OVERVIEW:**

- 100% Investment Grade securities
- Duration between 80% - 120% of Intermediate G/C Index
- Diversification by Sector, Issuer and Maturity
- Expected annual turnover between 20% - 40%
- Typical portfolio holds between 60 - 80 securities
- No derivatives, no junk, no foreign currency exposure

**COMPOSITE PERFORMANCE:**
**Johnson Intermediate Fixed Income**
*Periods ending 6/30/2019*

**Annual Returns**

	2018	2017	2016	2015	2014	2013	2012	2011	2010	2009	2008
<b>JOHNSON (GROSS)</b>	0.65%	3.28%	3.50%	1.21%	4.38%	-0.44%	5.24%	6.27%	6.36%	7.31%	7.33%
<b>JOHNSON (NET)</b>	0.39%	3.03%	3.25%	0.96%	4.12%	-0.69%	4.98%	6.01%	6.10%	7.04%	7.06%
<b>INTER G/C INDEX</b>	0.88%	2.14%	2.08%	1.07%	3.13%	-0.86%	3.89%	5.80%	5.89%	5.24%	5.08%

SOURCE: eVESTMENT

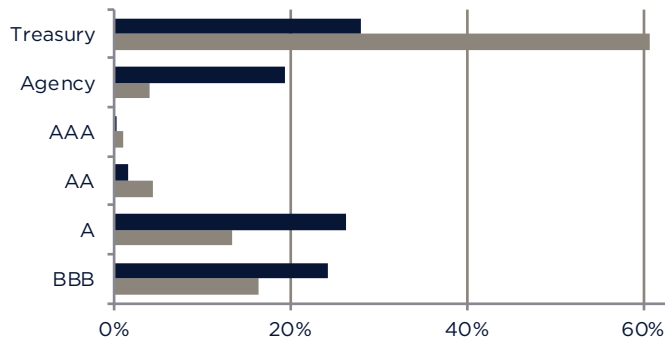
For more information on our products and services please contact a member of our Sales & Client Service Team at 513.389.2770.

**Michael Hoover**, Director, Institutional Sales & Client Service, [mhoover@johnsonasset.com](mailto:mhoover@johnsonasset.com)

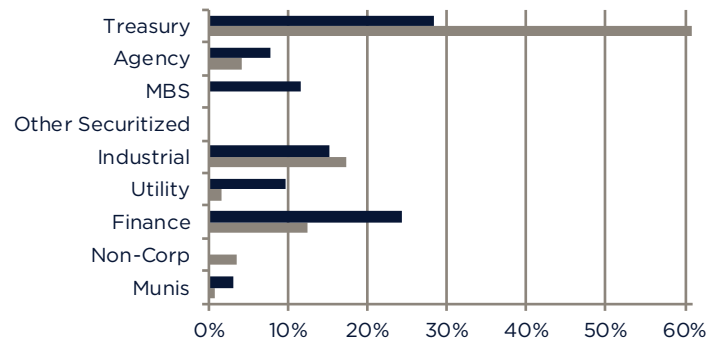
**Emily Fox**, CAIA, Director, Institutional Sales, [efox@johnsonasset.com](mailto:efox@johnsonasset.com)

**Irene Tsai**, CFA, CFP, ChFC, CLU, Director, Intermediaries & Client Service, [itsai@johnsonasset.com](mailto:itsai@johnsonasset.com)

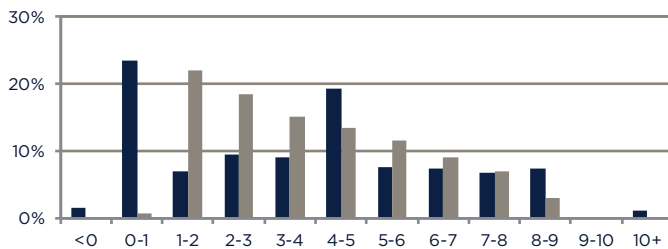
## QUALITY WEIGHTINGS:



## SECTOR WEIGHTINGS:



## DURATION ALLOCATION:



## PORTFOLIO SUMMARY

	JOHNSON	INDEX
COUPON	3.07%	2.71%
YIELD TO MATURITY	2.33%	2.13%
WEIGHTED AVG. MATURITY (IN YRS)	4.40	4.32
WEIGHTED AVG. DURATION (IN YRS)	3.87	3.92
CONVEXITY	0.05	0.05

■ JOHNSON INTERMEDIATE FIXED

■ BC INTERMEDIATE G/C INDEX

ALL DATA IS AS OF 6/30/2019  
SOURCE: BONDEDGE

## FIXED INCOME STRATEGY TEAM:

**Jason Jackman, CFA**

- President & CIO
- 26 Years Industry Experience

**Brandon Zureick, CFA**

- Portfolio Manager & Strategist
- 11 Years Industry Experience

**Dale Coates, CFA**

- Vice President & Portfolio Manager
- 37 Years Industry Experience

**David Theobald, CFA**

- Portfolio Manager
- 12 Years Industry Experience

**Michael Leisring, CFA**

- Director of Fixed Income
- 20 Years Industry Experience

Johnson Asset Management (JAM) is a division of Johnson Investment Counsel, Inc. ("JIC"), an independent and privately owned Midwestern based investment advisory firm registered with the Securities and Exchange Commission. Johnson Asset Management manages institutional separate account portfolios for a wide variety of for-profit and nonprofit organizations, public agencies, public and private retirement plans, and personal trusts of all sizes. It may also serve as sub-advisor for mutual funds. JIC's fees are available upon request and may be found in our Form ADV Part 2A. Performance data quoted herein represents past performance. Past performance does not guarantee or indicate future results. All data is current as of June 30, 2019 unless otherwise noted. Returns and net asset value will fluctuate. To determine if this strategy is appropriate for you, carefully consider the investment objectives, risk factors, and expenses before investing. Individual account management and construction will vary depending on each client's investment needs and objectives. Investments employing JIC's strategies are NOT insured by the FDIC or by any other Federal Government Agency, are NOT Bank deposits, are NOT guaranteed by any Bank or any Bank affiliate, and MAY lose value, including possible loss of principal.

Johnson Asset Management claims compliance with the Global Investment Performance Standards.

The Institutional Intermediate Fixed Income composite includes all fee paying, fully discretionary, actively managed institutional fixed income portfolios with a minimum value of \$500,000 and an investment objective of broad investment grade, taxable fixed income securities with an intermediate average duration, benchmarked against the Barclay's Capital Intermediate G/C Index. The Barclays Capital U.S. Intermediate Government/Credit Index measures the performance of U.S. Dollar denominated U.S. Treasuries, government-related and investment grade U.S. corporate securities that have a remaining maturity of greater than one year and less than ten years.

JAM's policies for valuing portfolios, calculating performance and preparing compliant presentations, as well as a complete list of composite descriptions are available upon request. Please contact our office at 513.389.2770 or 3777 West Fork Road, Cincinnati, OH 45247.

All returns reflect the reinvestment of investment income (dividends and/or interest) and capital gains. Valuations and returns are stated in U.S. dollars. Trade date accounting is used. Portfolio returns are calculated using time weighted return methodology on a monthly basis. Net returns shown reflect gross performance less the highest fee schedule for this strategy.

Actual client returns would also be reduced by brokerage commissions, custodial fees, and other client paid expenses detailed in JIC's Form ADV Part 2A.